



Charles Rennie Mackintosh
1868 -1928



Charles Rennie Mackintosh
Main entrance, Glasgow School of Art
Design: Charles Rennie Mackintosh



**Queen's Cross Church 1899
Known as the Mackintosh Church**





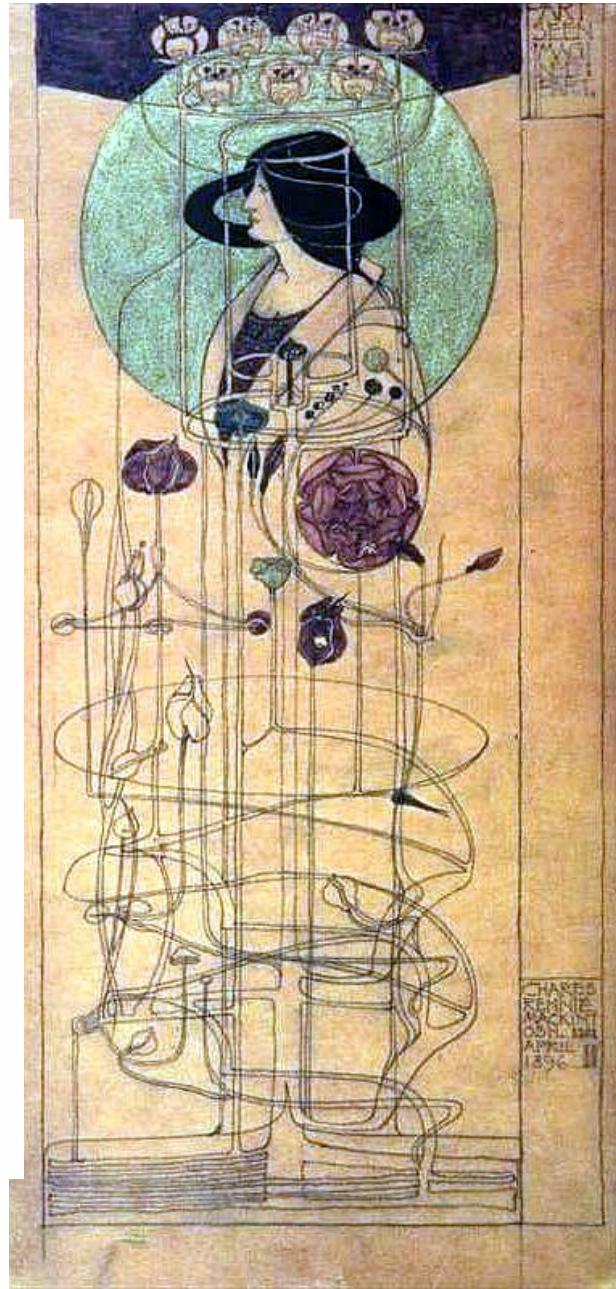
[Queen's Cross Church, Glasgow](#)



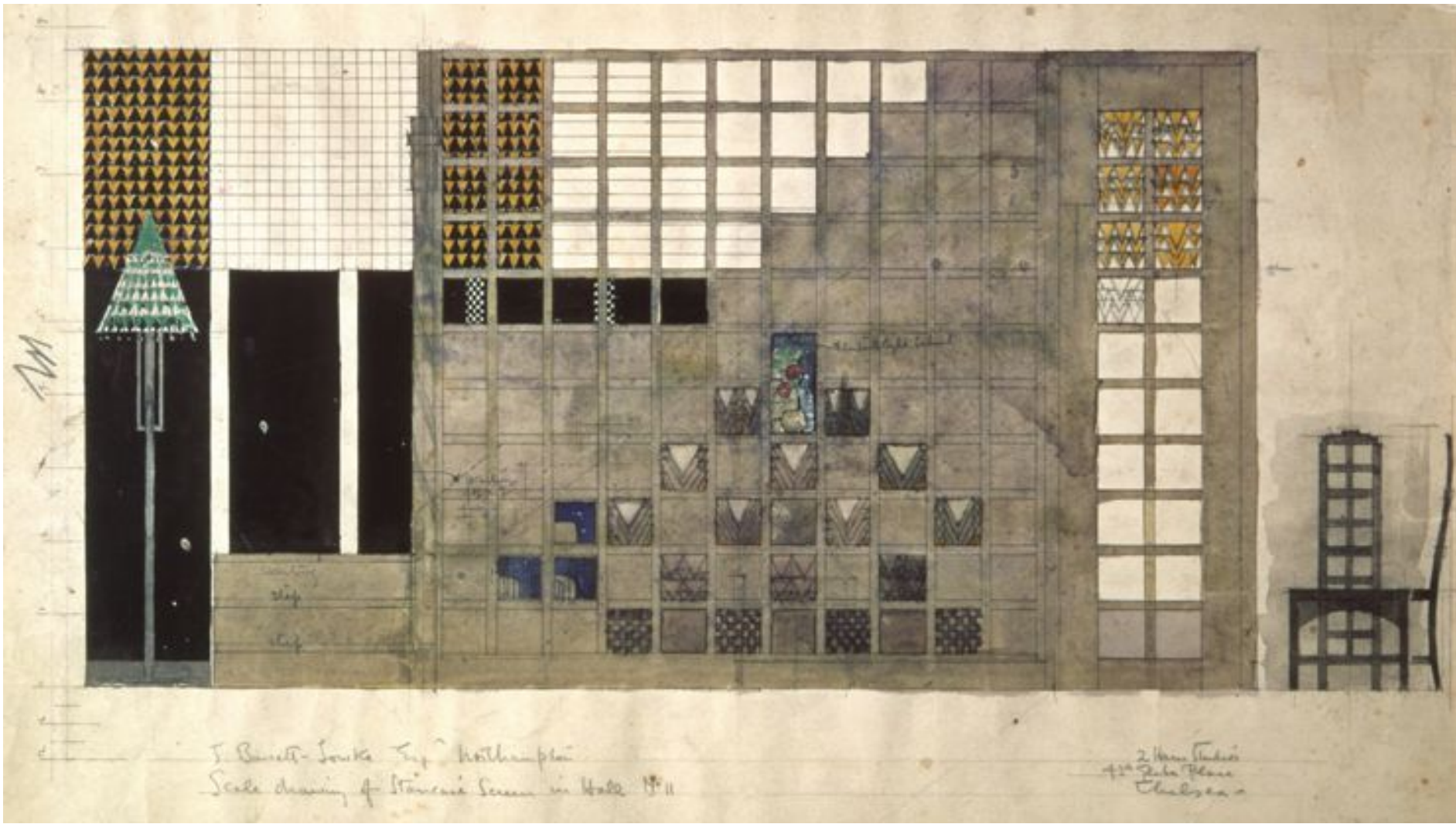
Watercolour 1896



CHARLES
RENNIE
MACKINTOSH



Charles Rennie Mackintosh – Part Seen Part Imagined 1896



J. Bennett-Louke Esq. Northampton
Scale drawing of staircase screen in hall 1911

J. Bennett-Louke
41st Duke Place
Chelsea

Derngate, Northampton: design for the staircase screen in the hall 1916 78 •



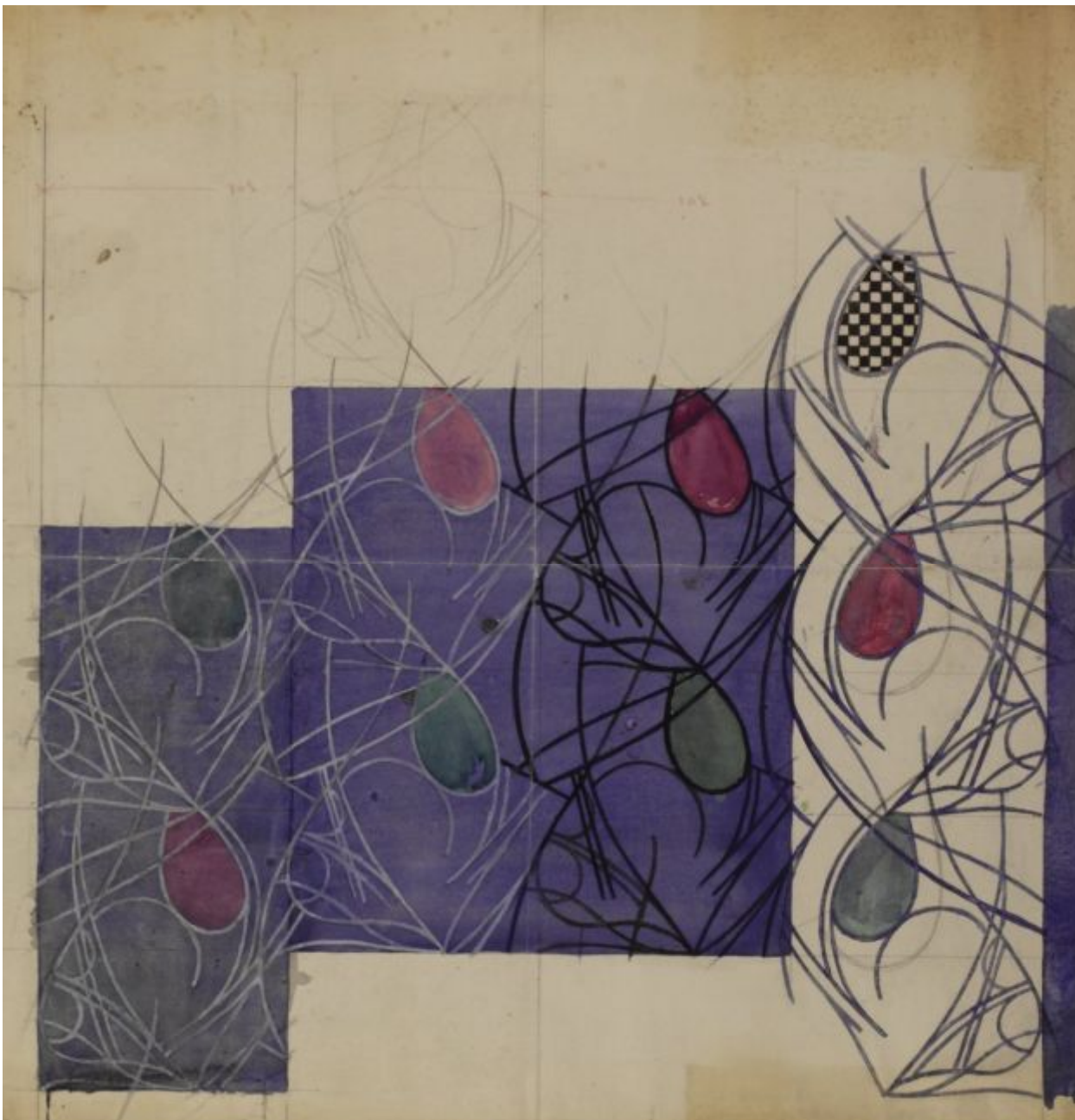
Textile design: tobacco flower



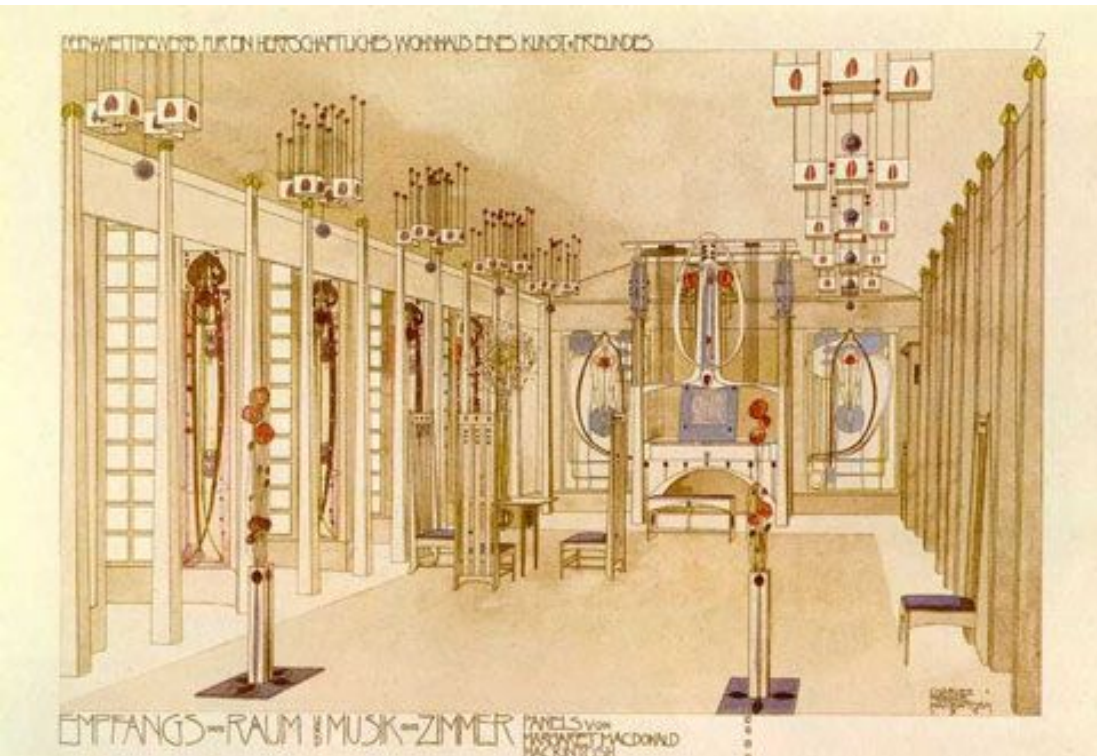
Textile design: stylised chrysanthemum c.1915-23



Textile design: stylised flower (verso)



Textile design: flower bulbs 1915-23



**House for an Art Lover competition entry, 1901
Design: Charles Rennie Mackintosh**



***Armchair, for 120 Mains Street, Glasgow 1902*
Materials: oak, painted white, with leather upholstery Dimensions: 114.3 x 70.2 x 55.5**



©photo musée d'Orsay / rmn

**Charles Rennie Mackintosh,
vers 1904 *Chaise* Alexexander Martin**

**Charles Rennie Mackintosh. (British, 1868-1928).
Tea Table. 1904. Ebonized wood, 61 x 93.3 x 50.2 cm.
Guimard Fund**



©photo musée d'Orsay / rmn

**Charles Rennie Mackintosh, Francis Smith
vers 1898 *Chaise***